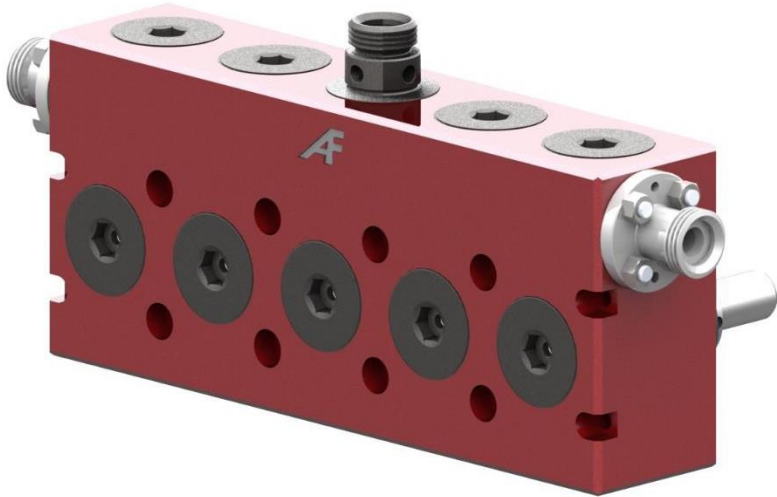




# AF1000 FLUID END ASSEMBLY



## AMERIFRAC FLUID EQUIPMENT FLUID END FEATURES

**PUMP MODEL: 1000HP QUINTUPLEX, 6" STROKE**

**HIGH QUALITY REPLACEMENT FOR OEM FLUID END**

**PRODUCED FROM U.S. MADE FORGINGS IN GRADES,  
4330 VANADIUM STEEL OR, SUPER-MAXX 17-4  
STAINLESS**

**ENHANCED DESIGN THROUGH 3D MODELING AND  
FINITE ELEMENT ANALYSIS (FEA)**

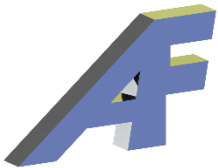
**DISCHARGE PRESSURE RATINGS BASED  
ON OEM SPECIFICATIONS**

**AVAILABLE AS LOADED ASSEMBLIES OR  
BARE BLOCKS**

**DISCHARGE AND GAUGE CONNECTIONS  
CONFIGURED PER CUSTOMER REQUIREMENTS**

**COMPLETE LINE OF REPLACEMENT PARTS**

- VALVE SERVICE
- PLUNGERS
- PACKING AND SEALS



Amerifrac Fluid Equipment, LLC engineers and manufactures premium quality fluid ends and components for Oil & Gas industry.

Through enhanced designs and the highest quality materials, our goal is to provide our customers with Best-in-Class products and support.

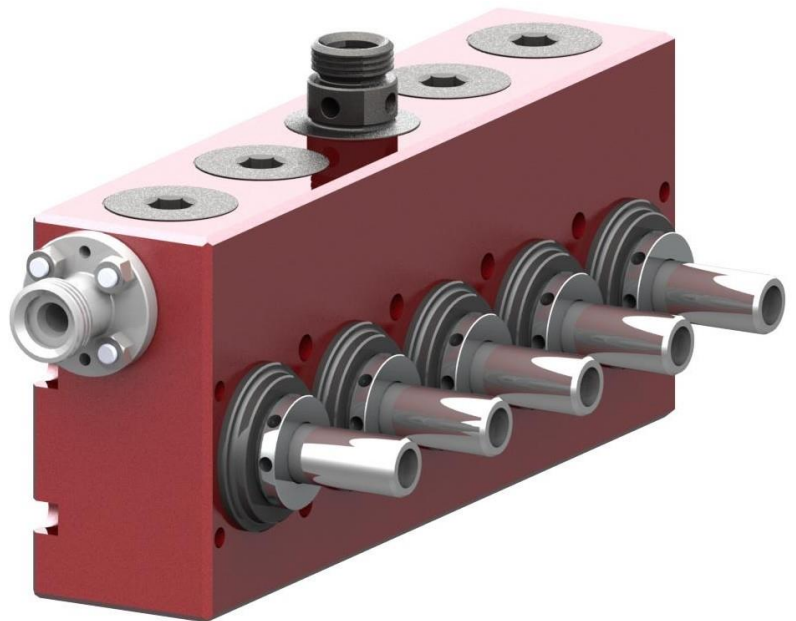
Custom tailored solutions available through our in-house engineering and manufacturing groups.

Proudly Made in the U.S.A



Contact:

Web: [www.amerifrac.com/](http://www.amerifrac.com/)



*\*Manufacturers' names or trademarks used are for identification purposes only. AmeriFrac Fluid Equipment, LLC is not affiliated with these companies.*