



AF2250XL FLUID END ASSEMBLY



AMERIFRAC FLUID EQUIPMENT XL-SERIES FLUID END FEATURES

PUMP MODEL: 2250HP TRIPLEX, 8" STROKE

ENHANCED DESIGN FOR LOWER OPERATING STRESSES AND LONGER LIFE

PRODUCED FROM U.S. MADE FORGINGS IN GRADES, 4330 VANADIUM STEEL OR, SUPER-MAXX 17-4 STAINLESS

ENHANCED DESIGN THROUGH 3D MODELING AND FINITE ELEMENT ANALYSIS (FEA)

INTERCHANGEABLE PARTS ACROSS THE XL SERIES PRODUCT LINE

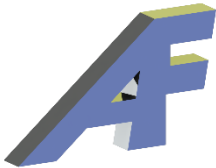
DISCHARGE PRESSURE RATINGS BASED ON OEM SPECIFICATIONS

AVAILABLE AS LOADED ASSEMBLIES OR BARE BLOCKS

DISCHARGE AND GAUGE CONNECTIONS CONFIGURED PER CUSTOMER REQUIREMENTS

COMPLETE LINE OF REPLACEMENT PARTS

- VALVE SERVICE
- PLUNGERS
- PACKING AND SEALS



Amerifrac Fluid Equipment, LLC engineers and manufactures premium quality fluid ends and components for Oil & Gas industry.

Through enhanced designs and the highest quality materials, our goal is to provide our customers with Best-in-Class products and support.

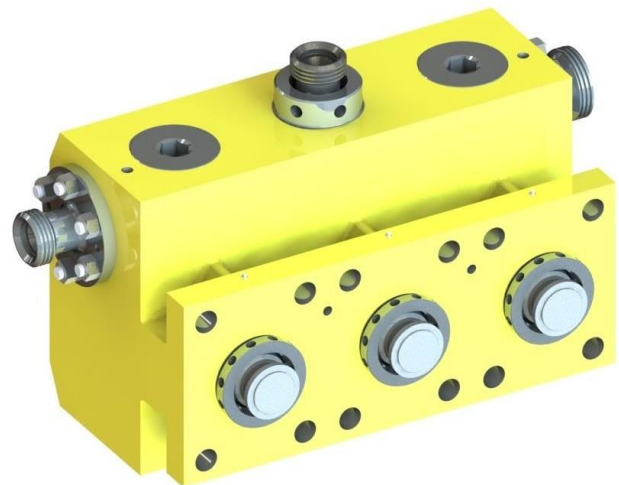
Custom tailored solutions available through our in-house engineering and manufacturing groups.

Proudly Made in the U.S.A



Contact:

Web: www.amerifrac.com



**Manufacturers' names or trademarks used are for identification purposes only. AmeriFrac Fluid Equipment, LLC is not affiliated with these companies.*